



Instruction Manual

MANTC8009-5 REV A 06-07-18

**HEAVY DUTY LOCKABLE CARRYALL CAGE
TC8009-5**



SILVAN AUSTRALIA PTY. LTD.

ABN 48 099 851 144

VICTORIA (HEAD OFFICE)

Telephone: +61 (03) 9215 2700

Fax: +61 (03) 9215 2701

www.silvan.com.au

NEW ZEALAND

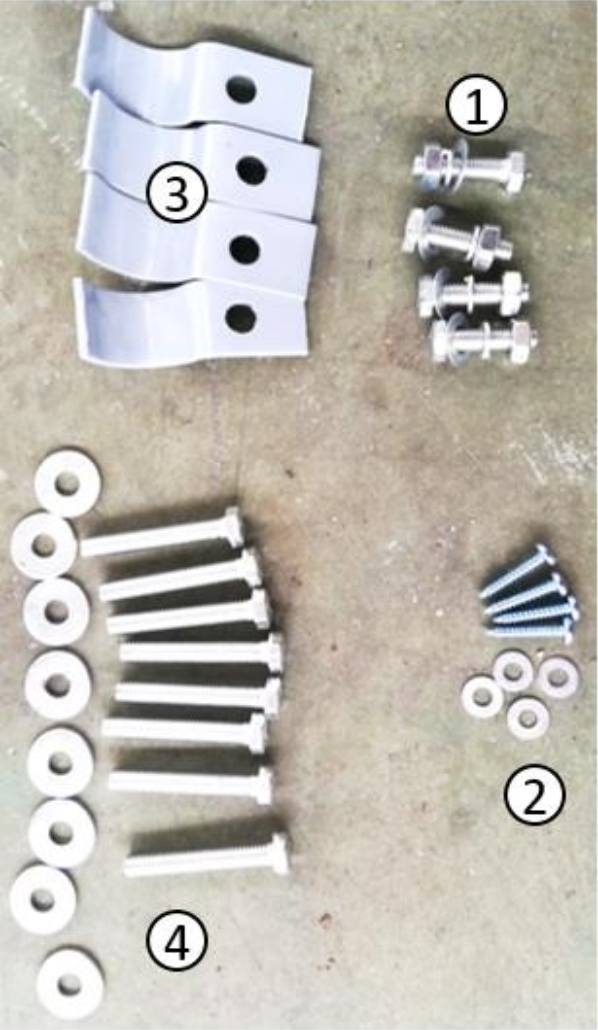
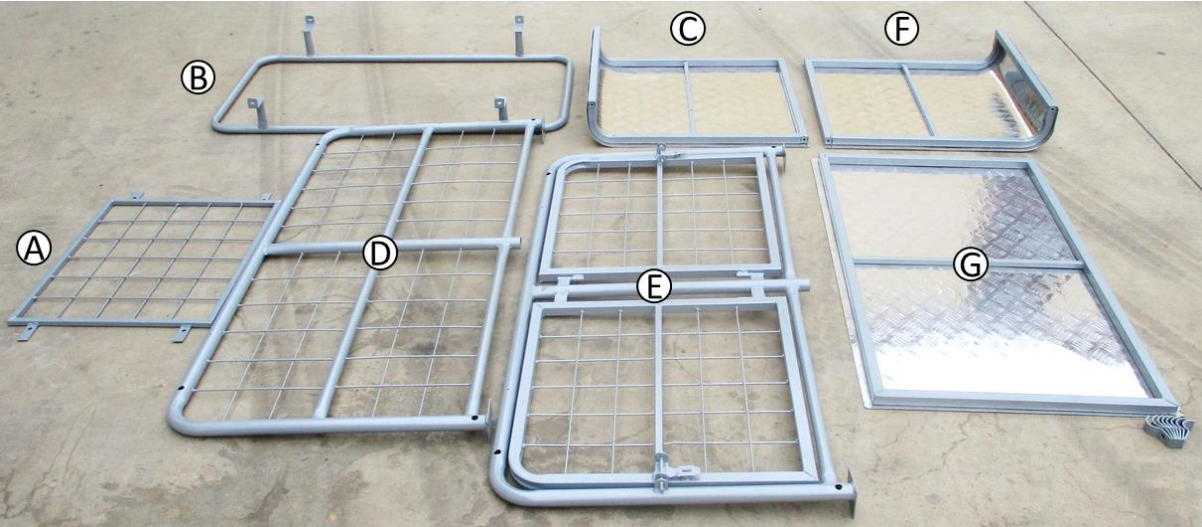
Hamilton, New Zealand

Telephone: +64 (07) 8496 033

Fax: +64 (07) 8496070

www.silvannz.co.nz

Parts Supplied



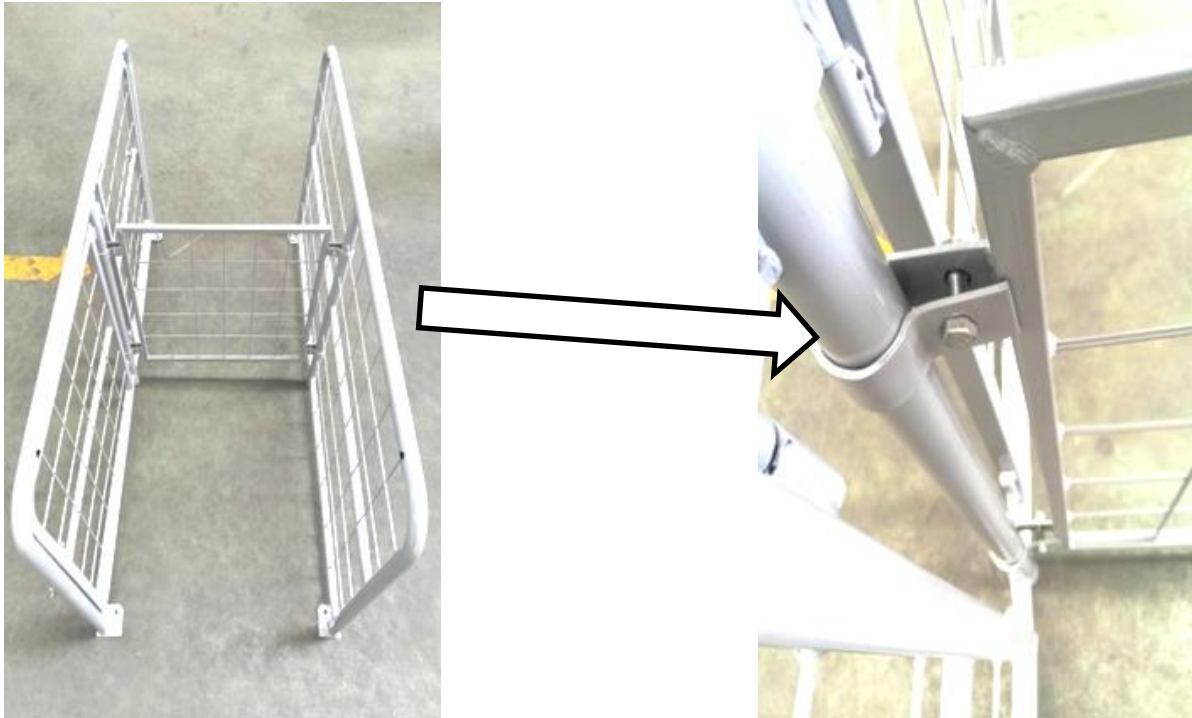
A	DIVIDER FENCE
B	CARRY RACK
C	LEFT FENCE
D	REAR FENCE
E	FRONT GATE FENCE
F	RIGHT FENCE
G	ROOF
1	M8 BOLT, NUT, FLAT WASHER, SPRING WASHER X 4
2	SCREW AND FLAT WASHER X 4
3	BRACKETS X 4
4	M8X50 BOLT AND FLAT WASHER X 8

IMPORTANT SAFETY INSTRUCTIONS

- Finished assembly weighs over 35 kg, use appropriate lifting techniques when moving
- Do not over tighten nuts and screws as this may affect performance of the cage

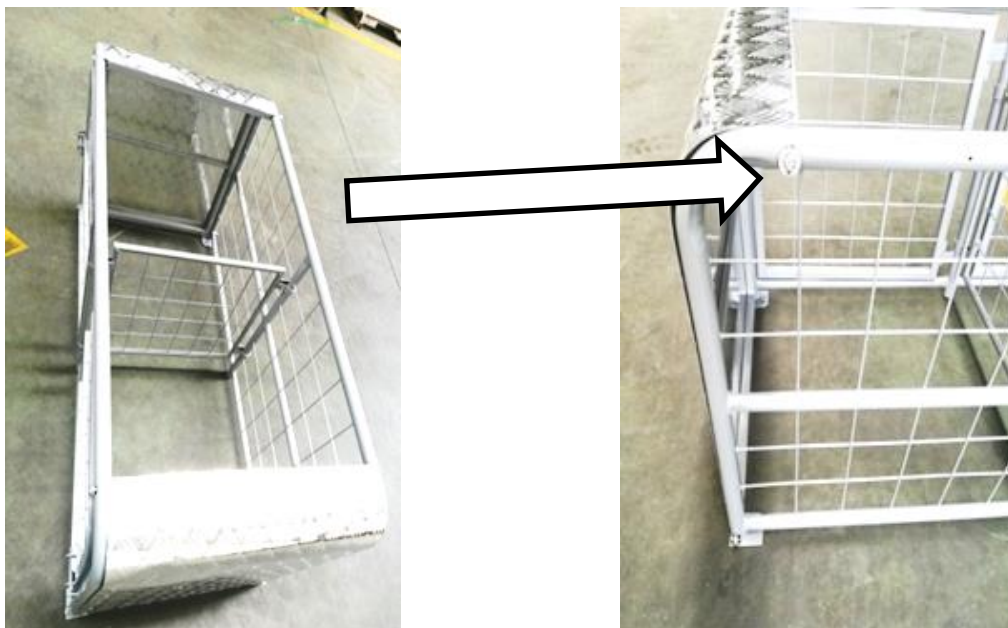
Step 1.

Assemble parts (A), (D) and (E) using M8 screws (1) and Brackets (3) as shown.



Step 2.

Attach left and right fences, (C) & (F), using M8x50 bolt (4) as shown. Use 4 bolts per side.

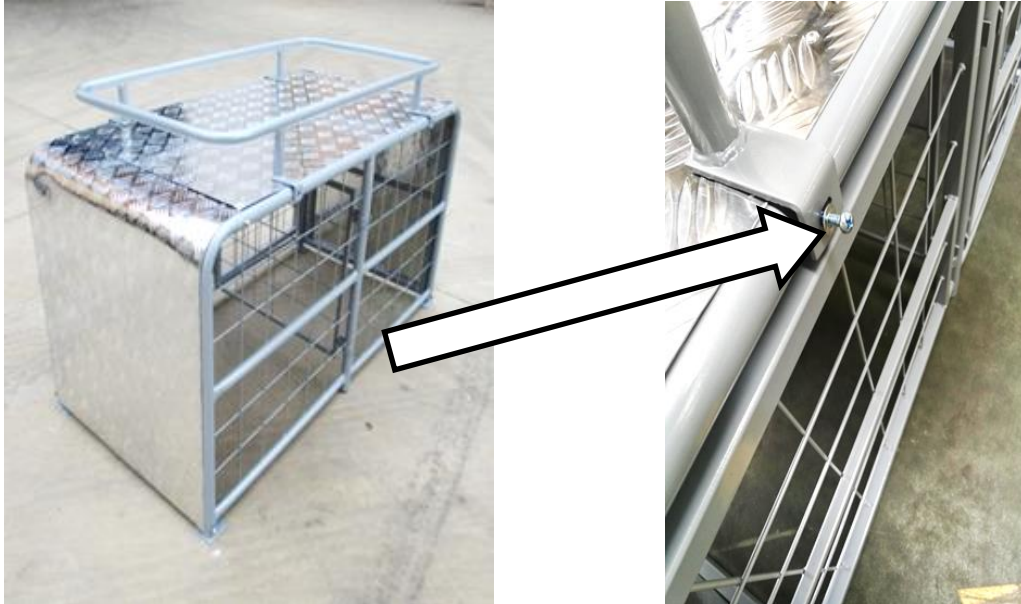


Assembly (cont.)



Step 3.

Place the roof (G) on top of the assembly and attach the carry rack (B) using 4 screws and flat washers (2)



FINISHED ASSEMBLY:

