



## ***Instruction Manual***

---

MANTR25 REV D 07/04/10

**DOMESTIC (TR25-S7)  
PROFESSIONAL (TR25-P)**



**SILVAN AUSTRALIA PTY. LTD.**

ABN 48 099 851 144

***VICTORIA (HEAD OFFICE)***

Telephone: +61 (03) 9215 2700

Fax: +61 (03) 9215 2701

[www.silvan.com.au](http://www.silvan.com.au)

***NEW ZEALAND***

Hamilton, New Zealand

Telephone: +64 (07) 8496 033

Fax: +64 (07) 8496070

[www.silvannz.co.nz](http://www.silvannz.co.nz)

No liability can be accepted for any inaccuracies or omissions in this publication, although due care has been taken to make it as complete and accurate as possible.

The information, illustrations and technical data were considered to be correct at the time of preparation.

In accordance with our policy of continuous development Silvan Australia Pty. Ltd. reserves the right to make changes at any time without notice.

### **YOUR SPRAYER DETAILS**

Record the details of your 25 litre Trollypak Sprayer here for future reference when discussing service with your Silvan dealer, ordering service parts or making a warranty claim.

DATE OF DELIVERY \_\_\_\_\_

SELLING DEALER \_\_\_\_\_

ADDRESS \_\_\_\_\_

TELEPHONE NO. \_\_\_\_\_

PRODUCT CODE \_\_\_\_\_

SERIAL NUMBER \_\_\_\_\_

INSTALLED BY \_\_\_\_\_

## Silvan Warranty

Our goods come with guarantees that cannot be excluded under the Australian Consumer Law. You are entitled to a replacement or refund for a major failure and for compensation for any other reasonably foreseeable loss or damage. You are also entitled to have the goods repaired or replaced if the goods fail to be of acceptable quality and the failure does not amount to a major failure.

We warrant our goods to be free from defects in materials and workmanship for the warranty period of 12 months from the date the product is delivered to the consumer.

Silvan warrants its authorised Dealer, who in turn warrants the original purchaser (consumer) of each new Silvan product that it will repair or replace the product, or, pay the cost of repair or replacement, as determined by Silvan without charge for labour or any defective or malfunctioning parts in accordance with the warranty limitations below.

This Warranty is in addition to any other rights and remedies available to consumers under the law.

### This Warranty Covers

Only conditions resulting directly from defects in workmanship or material under normal use and service.

### Warranty Exclusions

The Warranty does not cover:

- Conditions resulting from misuse, use of incompatible chemicals, exceeding machine specifications including overloading, impact damage, negligence, accidental damage or failure to perform recommended maintenance services as specified in the Owner/Operator Manual applicable to the product.
- Damage caused by continued use of a product after initial failure
- Any product which has been repaired by other than an authorised Silvan service outlet in a way which, in the sole and absolute judgment of Silvan, adversely affect its performance or reliability.
- The replacement of maintenance items such as diaphragms, batteries, V belts and ground engaging components, etc.

### How To Claim Warranty

Return the goods to the place of purchase at your cost and within the warranty period along with evidence of the purchase date. If the original supplier cannot be contacted, then contact Silvan as below and we can direct you on how to proceed with your warranty claim.

### How Your Claim Will Be Managed

The repair of a defective product qualifying under this warranty will be performed by any authorised Silvan service outlet within a reasonable time following the delivery of the product, at the cost of the owner, to the service outlet's place of business. The product will be repaired or replaced depending on the extent of the problem at the discretion of Silvan and the Silvan dealer.

# Safety Instructions



Before attempting to operate or install the sprayer carefully read and take note of the following safety warnings.

Failure to comply with these warnings may result in serious injury or death.

**Warning!** This sprayer is designed and manufactured solely for the purpose of applying agricultural chemicals to plants. Under no circumstances may it be used for any other purposes.

**Warning!** Prior to installing or using the sprayer all operators must have read and fully understand the contents of this instruction manual and the safety decal fitted to the sprayer.

**Warning!** Never allow an inadequately trained person to install or operate the sprayer.

**Warning!** Lifting points are provided on the sprayer but exercise extreme caution when lifting the unit and do not lift the unit when it contains liquid in the tank.

**Warning!** Refer to the chemical manufacturer's label for correct use and safe handling instructions of chemicals before filling or using the sprayer. Always wear the recommended safety clothing and equipment when handling chemicals and operating the sprayer. Ensure that all operators and associated personnel are familiar with the legal regulations and codes of practice that apply to the safe use, storage and disposal of spray chemicals

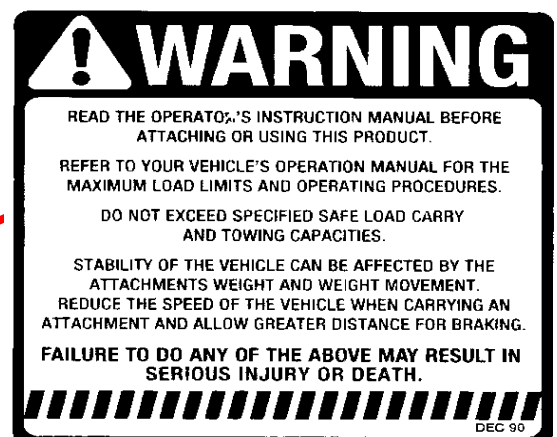
**Warning!** Before carrying out maintenance work, wash the sprayer thoroughly to remove all toxic chemicals that may contaminate the sprayer. Wear appropriate safety clothing and equipment when carrying out maintenance.

**Warning!** Never point the spray gun at any person or any part of the human body.

**Warning!** Never operate the sprayer in an explosive environment as arcing from the electric pump may cause an explosion. NEVER attempt to spray flammable liquids.

*The wording of the Safety decal is shown. All operators must be made aware of the decal and follow its instructions.*

*The decal must be fitted to the machine at all times in the location shown. If the decal is missing or unreadable it should be replaced by ordering a new decal from your Silvan dealer under part number, **DEC 48**.*



# Specifications



## GENERAL

The Selecta 25L Trolley Pak Sprayer is a self-contained compact portable sprayer with its own power supply. Whether you are a commercial grower, or hobby farmer, you will find many uses for this unit.

There are two models available; the TR25-S7 is designed to suit the Domestic user for a broad range of Agricultural spraying, the TR25-P is designed for Professional users whom need to spray under more controlled conditions.

The tank, pump and spray lance fittings are corrosion resistant and suitable for applying weedicides, herbicides, insecticides, fungicides, miticides, organic and green formulations. The Trolley Pak is designed for spot spraying but may be used in conjunction with a small boom for boom spraying.

## SPECIFICATIONS

**FRAME-** Heavy duty construction frame (1) with adjustable, reversible handle (2) and extra wide wheels (3). The TR25-P also includes a protective pump cover.

**PUMP (4)-** Both models feature Viton Valves and Santoprene Diaphragms. The TR25-S7 features a Smoothflo Pump, 7L/min (open flow) with constant flow technology, 120psi max pressure. The TR25-P features a Shurflo 8000 12volt DC, 6.8L/min open flow or 60psi max pressure.

**HOSE (5)-** Six meters of 8mm I.D. Ag Delivery hose.

**SPRAYGUN (6)-** TR25-S7 Lightweight, 600mm Stainless steel lance with adjustable nozzle. TR25-P does not include a spray gun.

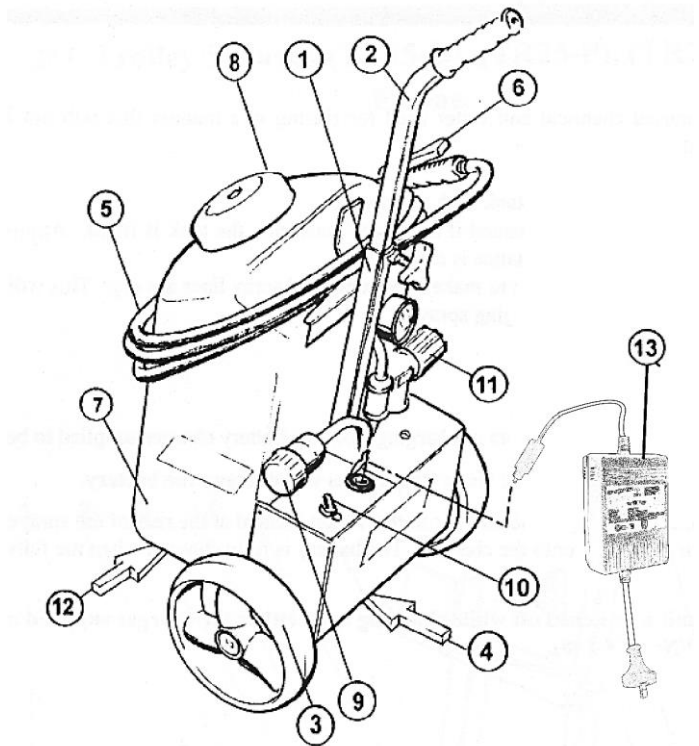
**TANK-** Made from impact resistant polyethylene, UV stabilized, translucent tank with calibration 25L capacity (7). Screw on lid with an anti-spill breather (8).

**FILTRATION (9)-** 100Mesh suction line filter.

**CONTROLS-** On/Off power switch (10). The pump features an electric pressure sensing switch will stop the pump when pressure reaches 60psi and start the pump when pressure falls below 40psi. The TR25-P features an adjustable pressure regulator with gauge (11) for selecting spray pressure.

**BATTERY (12)-** 12 Volt DC, 17 Amp hour, Sealed Lead Acid battery.

**BATTERY CHARGER (13)-** 240V AC supply, 1.8 Amp battery charger (always set charger to 12V output).



DIMENSIONS	DOMESTIC UNIT	PROFESSIONAL UNIT
Depth	440 mm	440 mm
Width	465 mm	465 mm
Height	610-1150 mm	650-1150 mm
Weight (dry)	19 kg	20 kg
Nominal Capacity	25 litres	25 litres

# Specifications (cont.)



---

## IMPORTANT INFORMATION ABOUT SPOT SPRAYERS

Silvan TrolleyPak Sprayers feature 12V positive displacement diaphragm pump with a pressure sensing switch. The pressure switch interrupts power to the pump when the system pressure builds up; power is resumed to the pump when the pressure falls. **The pressure switch does not in any way substitute for a pressure regulator.**

Restriction to the flow from the pump results in the increase in system pressure, which if great enough will cause the pressure switch to cut the power to the motor. When using the 12-volt spray unit in spot spraying applications the pressure switch can act to function as an automatic on demand switch, stopping the pump when the spray lance trigger is released. When the spray lance trigger is depressed fluid is released and the pressure will drop allowing the pressure switch to resume power to the pumps motor. The Professional unit (TR25-P) features a pressure regulator that allows you to set your maximum spray pressure and bypass excess pump flow back into the tank, in these applications the pumps electric pressure sensing switch will not act as an On-Demand switch because of pump flow bypassing back into the tank will stop pressure from building to high enough to automatically switch the pump off.

The use of a TrolleyPak for the application of chemical requires initial set up before operation to ensure the users personal safety, an even spray pattern and long life of the pump. Depending on your spraying requirements you may need to change or adjust the nozzle to suit your desired droplet size or spray pressure.

When the flow rate through the spray lance nozzle is very low, the pump may re-pressurize the outlet faster than the fluid is being released causing rapid pulsation/cycling (pump switching ON/OFF within 1 seconds).

**If the pump is subjected to rapid pulsation/cycling during normal operation, or for infrequent periods may reduce the life of the pump.** Applications which exhibit rapid pulsation/cycling should have restrictions in the nozzle minimized by fitting a larger (less restrictive nozzle) Pulsation can cause premature failure of the pressure switch or pump; these failures are not as a result of the workmanship of the component.

It is therefore highly recommended that the user performs the appropriate set-up to facilitate in trouble free usage.

## Installation

---

For the Domestic unit (TR25-S7), screw the fitting on the end of the hose to the outlet of the pump.

For the Professional unit (TR25-P), the hose needs to be connected to the hose-barb near the pressure regulator with a hose clamp. As the Professional unit (TR25-P) is not supplied with a Spray gun or boom, you will also be required to connect the item to the delivery end of the spray hose.

Slip the trolley handle into the locator on the frame and tighten the tri-screw to affix the handle at you selected handle height.

## SETUP AND TESTING

It is always recommended that you first test all spray equipment thoroughly with clean water. The TR25-S7 is supplied with a Spray Gun containing a large orifice blue adjustable nozzle, which when twisting the tip can allow for a greater flow of liquid. It is recommended that adjustable nozzle is used first and can be changed later if you require. The TR25-P requires the operator to fit your specific purpose selected Spray Gun.

1. Be sure to wear safety equipment as recommended by the chemical manufacturer before adding chemical to the sprayer
2. Check the filter is clean and undamaged (see Maintenance section).
3. Fill the tank with clean water.
4. Ensure the 6-meter spray hose and spray lance connected. (TR25-S7 Fit the blue adjustable nozzle or any large orifice nozzle you may wish to use).
5. Check all pipes, hoses, hose clamps and connections for leaks or damage.
6. Switch the pump ON.
7. Depress the spray lance trigger to flush air from the lines. The pump is self-priming and should start spraying within 30 seconds.
8. Check the hose connections for leaks, if any are found stop the pump and rectify the problem before continuing.
9. For the TR25-P Pressure can be controlled by turning the knob on the Pressure regulator; clockwise will increase the pressure, anti-clockwise will decrease the pressure. The desired pressure can be fixed by securing the locknut against the adjustment knob.
10. For the TR25-P Its highly recommended that the selected output pressure and the orifice size of your selected nozzle(s) allows the pump to run, so that the pump motor is not cycling on/off during operation (also called pulsation).
11. Once the nozzle is set and the pump operates free of pulsation/cycling, the spot sprayer is ready to be utilized for spot spraying of chemical.

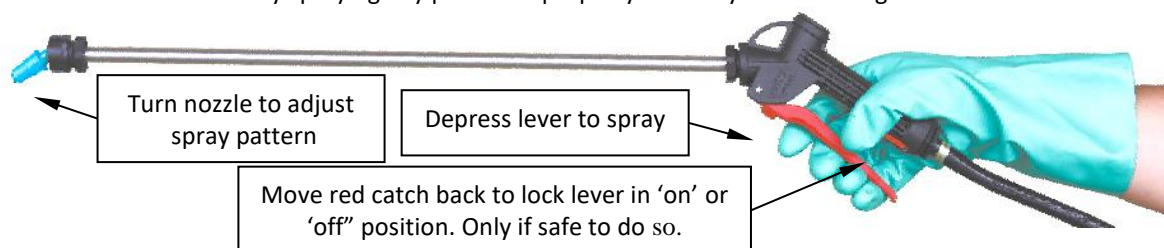
**Important note: Spray units must not be operated while the pump is pulsating/cycling because it can cause premature component failure.**

Chemical solution may now be added to the tank.

Follow the mixing instructions and safety precautions provided by the chemical manufacturer. Before adding concentrated chemicals, partially fill the tank with water then add the chemical and complete filling with water.

Wear all the safety equipment recommended by the chemical manufacturer before adding chemical to the sprayer and whilst conducting spraying operations.

The Spray Gun used with the Domestic unit (TR25-S7) has an additional safety feature; the lever catch can be used to lock the lever closed to prevent accidental spraying. The catch can also be used to lock the lever open for continuous spraying. This should only be done when safe to operate in this manner and where there is no likelihood of inadvertently spraying any person or property that may suffer damage.



After spraying is completed, drain unused chemicals from the tank. Rinse the tank with clean water then operate the sprayer with clean water in the tank to clean out the pump, hose and spray lance. Do not leave chemicals in the tank as they may crystallize or form solids in the pump, spray lines and block the filter.

If heavy frosts are experienced, run the sprayer until the pump and spray lines are dry. This will prevent water freezing in the pump or spray lines and damaging the sprayer.

**Warning!** Dispose of unused chemical and water used for rinsing in a manner that will not endanger people, animals or the environment in accordance with local regulations and the handling and disposal information available from the chemical manufacturer.

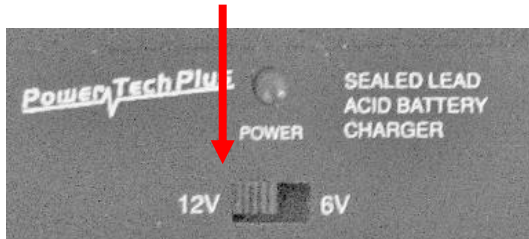
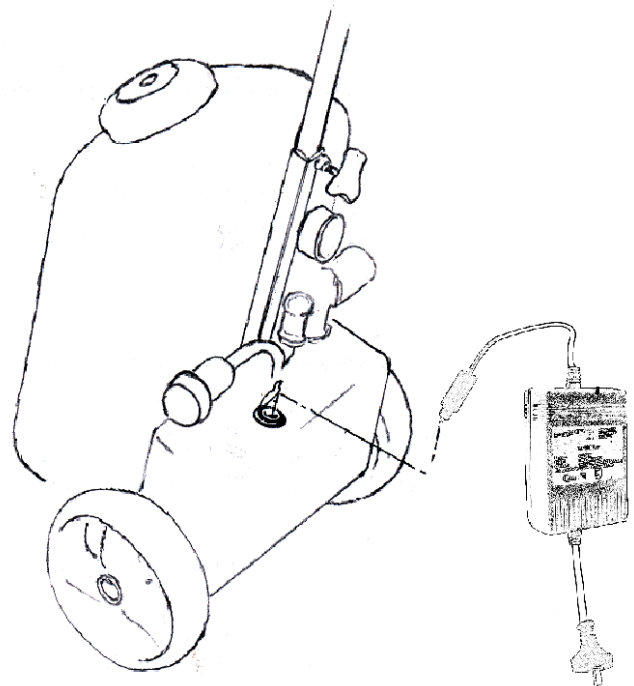
## CHARGING THE BATTERY

The TrolleyPak utilises a 12V DC sealed lead-acid (SLA) battery which requires approximately 6-8 hours of charging from the supplied battery charger to fully charge the battery.

**Always charge the battery after use. Do not leave the battery flat as it will damage the battery.**

The Selecta TrolleyPak is supplied with a battery charger for SLA batteries with two available charging voltages.

**To correctly use this charger, always have the charger set to 12V.**



Ensure that the TrolleyPak's power on/off switch is set to off. To charge the battery, connect the plug of the charger to the socket located at the rear of the sprayer as shown in the diagram above and turn the power on the charger.

Once the battery has been charged or has been charging for over 8 hours, disconnect the charger.

**Warning! Never leave the battery to charge unattended.**

**Warning! Do not charge damaged batteries.**

**Warning! Never charge the battery for periods of time longer than 8 hours. Over Charging the battery can create an explosion and fire hazard.**

## CLEANING THE FILTER

To avoid chemical contamination, wear appropriate protective equipment including gloves whenever maintenance is carried out. Turn off the pump and depress the trigger on the spray lance to dissipate any pressure, unscrew the cap on the filter housing in order to remove the filter. Clean the filter with clean water and a bristle-brush, do not use a wire brush or sharp object as this may damage the mesh. Once the filter is clean, put it back into the filter housing and replace the cap.

